

INSIDE THIS ISSUE:

President's Message	2
HFDP Certification	3
12-13 Seminar Ideas	3
Government Affairs	4-5
Chiller Plant Tour Photos	6
May Meeting Photos	6-7
CTTC Article	8
RP Contributors	9
PE Notice and New Member List	10



# QUAKER CITY CLIMATE

## Philadelphia Chapter Leadership Recall Interview

**MARK P. HERSHMAN, PE**

**Chapter President 1985**

Mark was born in Philadelphia, graduated Cheltenham High School, and received his Bachelors in Mechanical Engineering from Drexel University in 1970. His high school summers were spent working for his father, Oscar Hershman, at Hershman Sheet Metal. While attending Drexel, his co-op was at Eastman Kodak in Rochester, NY, and at Nesbitt in Northeast Philadelphia. Working as a Laboratory Technician at Nesbitt on new products in the test facility, he gained hands on experience in electrical work, pipe fitting and rigging. All this was done under close supervision of the experienced design engineers. These experiences led to his interest and later career in testing and balancing.

From 1968 to 1992, Mark worked at Hirsch, Arkin Pineherst Incorporated Mechanical Contractors (HAP). HAP was located in Manayunk and later in Northeast Philadelphia before closing in 1992. He worked as a Design Engineer, Project Manager, Manager of the Test and Balancing Division, Corporate Chief Engineer, General Manager of Service, President and General Manager.

In 1992, Mark established M.P. Hershman, PE Incorporated, Consulting Engineers. The firm specialized in mechanical and electrical design and analysis of systems in all types of buildings.

In 2012, Blackney Hayes Architects announced the launch of a new engineering division to provide MEP consulting services out of the firm's Independence Park, PA offices. The new division, BHH Engineers, will be led by Mark Hershman, PE, whose firm M.P. Hershman, PE Inc. has collaborated with Blackney Hayes since 1992.



*(continued on page 6 . . . )*

2011- 2012

President

Bob Finkboner

President-Elect

James Piscopo, PE, LEED AP

Vice President

Jared Johnson, PE

Treasurer

Mike Witkowski, PE

Secretary

Ashley Lester, PE, LEED AP

Senior Governor

John Pardekooper, PE

Governors

Ashley Lester, PE, LEED AP

Mark Maguire, PE, LEED AP

Casey Younkins

Eric Zanolini

Web Site Editor

Gary Debes

Chapter Technology

Transfer Committee Chair

Mark Maguire, PE, LEED AP

Research Promotion Chair

Gary Debes

School Coordinators

James Lill, PE

Jeff Crozier, PE

Refrigeration

Michael Calabrese, PE, CEM,  
LEED AP

Student Activities

Committee Chair

Ashley Lester, PE, LEED AP

Membership Promotion Chair

Kevin Goodwin, LEED AP

Education Chair

Ashley Lester, PE, LEED AP

Programs Committee Chair

James Piscopo, PE, LEED AP

Chapter Historian

Justin Mazur

Young Engineers in ASHRAE

Casey Younkins

## PRESIDENT'S MESSAGE

Our June meeting was the golf outing which took place on June 1st at the Northampton Valley Country Club. The weather was great and the golf course superb. That was my last meeting as your Chapter President and I must thank all the Officers, Board of Governors, Committee Members and Chairs for another great year for our Chapter. It has been an honor as well as an amazing experience to serve as the Chapter President. If it wasn't for the wonderful group of people who serve as the Board of Governors, Officers, and Committee Chairs, the Philadelphia Chapter would not be as successful. These people have committed their time and have shown me and the Chapter their passion and dedication to ASHRAE. As for me, I will move into the Senior Governor position next year. I'm sure Jim will have me involved in something interesting.

The Chapter is in great hands with the following Officers and Board Members for 2012-2013:

<b>President:</b>	<b>Jim Piscopo PE</b>
<b>President-Elect:</b>	<b>Jared Johnson PE</b>
<b>Vice President:</b>	<b>Mike Witkowski PE</b>
<b>Treasurer:</b>	<b>Ashley Lester PE</b>
<b>New Board Member:</b>	<b>Michael Calabrese PE</b>
<b>Returning Board Members:</b>	<b>Eric Zanolini PE, Casey Younkins, Bob Finkboner</b>

Two Chapter members have volunteered to take over recently vacated positions. Brian Dail will lead Chapter Refrigeration and Jeffrey Pisarek will assume the role of YEA Chapter Chair. Welcome aboard, gentlemen!

As a group, our Officers and Committee Chairs will be attending the Chapter Regional Conference this August 10th and 11th in Baltimore, Maryland. At this event, new Committee Members will receive training and instruction on how to perform their duties as Committee Chairs, and 'old' Committee Chairs will receive recognition and awards for their service. The conference is open to all Chapter Members who have a desire to attend and often times is preceded by a full day seminar offering many topics presented by the industry subject knowledge experts. For more information regarding the Conference, contact any Officer, Board Member or Chapter Chair.

In closing, I would like to thank you all for your support and encourage all Members to renew their commitment to ASHRAE and to support Jim Piscopo as President for 2012-2013.

*Bob Finkboner*  
Philadelphia Chapter President  
[c021@ashrae.net](mailto:c021@ashrae.net)

### **Healthcare Facility Design Professional (HFDP) Certification**

Growing number of aging medical facilities, advances in technology, shifting environmental requirements and an increasingly older population have created a critical need for expansion and renovation of healthcare facilities.

The HFDP certification demonstrates an understanding of medical terminology and facility operations as they affect HVAC+R design in healthcare facilities. ASHRAE has developed the HFDP certification program in close collaboration with the American Society for Healthcare Engineering (ASHE) of the American Hospital Association (AHA).

The exam is available on computer at proctored testing centers through Applied Measurement Professionals, Inc., which has testing centers in Center City Philadelphia, Wilmington, DE and Robbinsville, NJ.

This is in addition to the other five certification programs currently available:

- Building Energy Modeling Professional;
- High-Performance Building Design Professional;
- Building Energy Assessment Professional;
- Commissioning Process Management Professional;
- Operations and Performance Management Professional.

Additional information is available on the ASHRAE Website at [www.ashrae.org/certification](http://www.ashrae.org/certification). Or you can email the Philadelphia Chapter Technology Transfer Committee at [c021cttc@ashrae.net](mailto:c021cttc@ashrae.net).

---

### **Ideas for Seminars Next Year?**

The Chapter Technology Transfer Committee is responsible for providing educational programming in the form of several seminars per year. This year, the committee presented three half-day seminars on timely HVAC topics: data center cooling, lab design and energy modeling. The committee is planning similar events for the 2012-13 chapter year, and we want to hear from you about content you would find relevant for a half-day seminar. Please send ideas to the Chapter Technology Transfer Committee at [c021cttc@ashrae.net](mailto:c021cttc@ashrae.net).

---

**Government Affairs:**  
**2012 Pennsylvania Code Coalition**

The Philadelphia Chapter of ASHRAE has recently been engaged in conversations about a controversial decision regarding the process of code adoption in Pennsylvania.

Currently the Commonwealth follows the 2009 International Building Codes. The Review and Advisory Council ("RAC"), a 19 member panel appointed by the Governor, votes on whether to adopt new versions of the model codes into the Pennsylvania Uniform Construction Code (the "UCC"). The RAC reviews code changes on a triennial basis, and determines if they should adopt the code changes or not.

In 2011, new legislation was passed that modified the way that the RAC determines whether the codes should be updated. Prior to 2011, the new codes went into effect unless the RAC decided to reject a certain change. Now, the old code remains in effect unless the RAC decides to adopt each change. Moreover, instead of a simple majority, the RAC is now required to have a 2/3 majority to adopt each change.

On January 18<sup>th</sup>, 2012 the RAC voted to reject the adoption of the 2012 International Building Codes as a whole, and is recommending that the Pennsylvania Legislature change the code review cycle from 3- years to 6- years. The RAC has issued a report to the Department of Labor and Industry with their recommendations.

If the RAC's decision is accepted and acted upon by L&I, and the Legislature extends the code cycle to six years, Pennsylvania will not have updated codes until at least 2018.

In addition, future versions of the UCC would not be able to reference the 2012 code. When the 2015 code changes are reviewed, the RAC will need to cross reference back to the 2009 code and any change from 2009 to 2012 would be disregarded. In addition, any change in the 2015 code that builds on the 2012 code changes would likewise have to be disregarded. As you can imagine this process will be difficult to follow and has the potential to adversely affect our construction codes and our profession moving forward.

As ASHRAE Philadelphia's Board, we have reviewed the issues at hand and believe this action to not adopt the 2012 International Construction Codes does not coincide with ASHRAE's mission statement:

**To advance the arts and sciences of heating, ventilating, air conditioning and  
refrigerating to serve humanity and promote a sustainable world.**

Construction codes continually advance our industry to improve our buildings, improve life safety and improve our quality of life. Because the RAC did not adopt the 2012 codes, or cite specific reasons each change was not reviewed, the Board has agreed to support the recently formed 2012 Pennsylvania Code Coalition.

*(continued on page 5 . . . )*

**Government Affairs***(continued from page 4 . . . )*

The Coalition's objective is protest the RAC's decision, and ask the RAC to perform its due diligence and review each code section as it was tasked to do. The Coalition is also working to address the underlying issues with the 2011 legislation to ensure that a practical process for reviewing future code changes is enacted.

The Coalition is represented by Shari Shapiro at Cozen O'Connor Public Strategies. In addition to our organization, current Coalition members include:

- PENNBC (Municipal Code Officials)
- PaFCO (Fire Code Officials)
- St. Gobain/CertainTeed
- International Code Council
- Keystone Energy Efficiency Alliance
- North American Insulation Manufacturers Association
- National Fire Sprinkler Association
- PennFuture
- PennEnvironment
- Energy Efficient Codes Coalition
- Alliance to Save Energy
- Building Codes Assistance Project
- Northeast Energy Efficiency Partnership
- Clean Air Council
- Onion Flats
- Practical Energy Solutions
- Delaware Valley Green Building Council

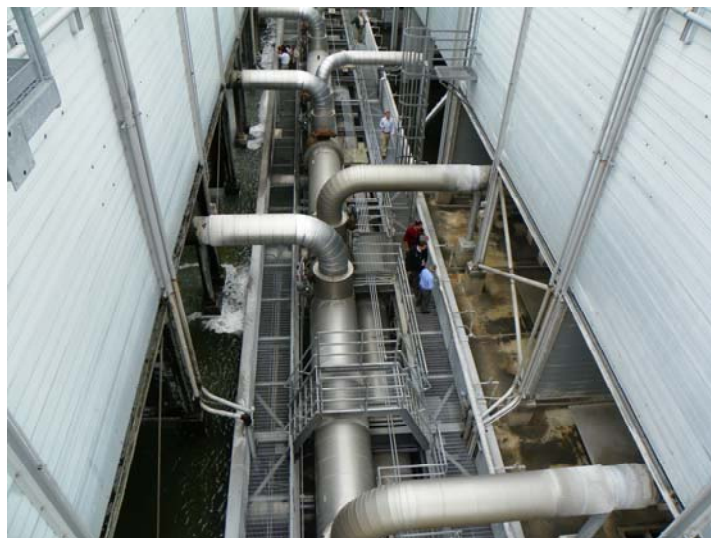
If you have any follow up questions please ask and I will do my best to address them.

Mike Witkowski  
2012-2013 Vice President  
Philadelphia Chapter ASHRAE  
P 215-641-1158  
[c021vp@ashrae.net](mailto:c021vp@ashrae.net)



### Chiller Plant Tour Photos

A tour was held on May 3rd of the University of Pennsylvania Module VII Chiller Plant. It contains 30,000 tons of cooling capacity and is the largest of the three chiller plants on campus that support the central chilled water system. The plant was designed to accommodate an additional 20,000 tons of cooling capacity as demand for chilled water on the University's campus grows.



### May Meeting Photo

Bob Finkboner (right), President of the Philadelphia Chapter of ASHRAE, presents Mark Jelinske, PE of Cator-Ruma Associates, with a Liberty Bell following his presentation at the May meeting on "Dealing with Dampers—Smoke/Fire Damper Requirements of the International Code".

### Past Presidents Night Photos



Past Presidents (from left): Gary Debes, Steve Piccolo, Bill Hart, Steve Ridenour, Steve Solotist, Jay Halsey, Russ McFarlan, Marvin Ginsburg, Ken Strup, Jeff Gilbeaux, and (kneeling) Keith Cockerham.

2012-2013 ASHRAE Philadelphia Chapter President Jim Piscopo (right) presents the Outgoing President Award to Bob Finkboner, President for 2011-2012.



Board Members for 2012-2013 (from left): Ashley Lester, Bob Finkboner, Mike Witkowski, Jared Johnson, and Jim Piscopo.  
Missing: Michael Calabrese, Eric Zanolini, and Casey Younkins.

This CTTC article was submitted by Rob Innes of Mutimer Company, the Philadelphia-area manufacturers' representative for New York Blower. Please submit articles highlighting novel HVAC technologies to the Chapter Technology Transfer Committee ([c021cttc@ashrae.net](mailto:c021cttc@ashrae.net)) for consideration in future newsletters.

### **INTEGRAL MOTORS FOR CENTRIFUGAL FANS**

#### **SELECTION CRITERIA**

Selection of the proper motor is based on numerous criteria, including horsepower, service factor, enclosure, ambient temperature, phase and voltage, speed, and efficiency. If all air-handling systems had exactly the same volume/pressure relationship the designer anticipated, all motors could be selected merely to cover the fan brake horsepower (BHP) calculated. However, system design usually involves some estimating, and systems are not always installed exactly as intended by their designers.

With centrifugal fans, the fan speed must be increased to handle the desired volume when the system resistance is higher than anticipated, creating a substantially higher fan BHP requirement. For radial and forward-curved wheels, if the system resistance is lower than anticipated, fan BHP will increase with the greater volume of air being handled. Refer to Figure 1.

[Click here to read the entire article.](#)

---

#### **MARK P. HERSHMAN, PE**

*(continued from page 1 . . . )*

Mark holds a Professional Engineer License in 7 states.

Mark was introduced to ASHRAE by HVAC Drexel Night Course instructor Larry Spielvogel. He joined in 1969 and enjoyed having the access to industry leaders' wisdom, experience and technical information. Dan Driscoll and Walt Spiegel encouraged Mark to become active in ASHRAE. He joined the Board of Governors in 1980. His first assignment was as Editor of the *Quaker City Climate*, and he became ASHRAE Philadelphia Chapter President in 1985.

He has seen ASHRAE change from a follower to a leader in our Society. The Society has forced change in technology as well as standards, codes and laws. ASHRAE has been a consistent influence throughout Mark's career and assisted in his transition from contracting to the consulting engineer profession. Mark notes the advice of his father, Oscar, who said, "You receive back more than you put in when you are involved in industry."



**Research Promotion 2011-2012**

I would like to thank the following Contributors to ASHRAE Research for the 2011-2012 Year. With their contributions, our committee was able to surpass our \$31,000 goal by collecting \$31,261 as of 6/15/12.

Thank you,  
Gary Debes

**CORPORATE CONTRIBUTORS**

ARKEMA, INC.  
ASSOCIATED ENGINEERING CONSULTANTS  
ASSOCIATED STEAM SPECIALTY COMPANY  
B. J. TERRONI COMPANY, INC.  
BURNS ENGINEERING, INC.  
BUSH SALES ASSOCIATES, INC.  
CARRIER CORPORATION - UTC  
CLAPP ASSOCIATES, INC.  
CM3 BUILDING SOLUTIONS  
COWARD ENVIRONMENTAL SYSTEMS, INC.  
DVL INCORPORATED  
E. F. SIEGFRIED CO., INC.  
ELITE AIR SYSTEMS INCORPORATED  
ERNEST D. MENOLD, INC.  
EWING COLE  
GENESIS ENGINEERS  
JAMES R. McQUAIDE, INC.  
JOHN F. SCANLAN, INC.  
McHUGH ENGINEERING, INC.  
MERION PUMP & EQUIPMENT CO.  
METROPOLITAN ACOUSTICS  
MUTIMER COMPANY-PLYMOUTH MEETING  
PHILLIPS McDADE  
PEIRCE-PHELPS, INC. - PHILADELPHIA  
SASS MOORE & ASSOCIATES, INC.  
SCHILLER & HERSH ASSOCIATES, INC.  
SIEMENS BUILDING TECHNOLOGIES - BLUE BELL  
SMCA OF PHILADELPHIA & VICINITY  
THE TRI-M GROUP, LLC  
TOZOUR ENERGY SYSTEMS  
UNIVERSAL MOTOR DISTRIBUTORS, INC.  
VINOKUR PACE ENGINEERING SERVICES, INC.  
WEIL-McLAIN

**INDIVIDUAL CONTRIBUTORS**

LOU ABRUZZESE  
CHARLES G. BASH  
LAWRENCE J. BOERSIG  
BARRY A. BOOSE  
MICHAEL CALABRESE  
KEVIN M. COLLINS  
CHARLES W. COWARD, JR.  
PAUL S. DA KAY  
GARY C. DEBES  
DANIEL J. DRISCOLL  
DANIEL J. EBBERT, JR.  
ROBERT H. FINKBONER  
RICHARD RENE GALIE  
JEFFERY GILBEAUX  
WILLIAM G. GOVE  
E. WAYNE HOLMES  
JARED A. JOHNSON  
ROBERT L. JONES  
JOHN E. KAMPMAYER  
DAVID P. KENNEDY  
NARENDA T. KIRI

JUSTIN KNAPP  
GEORGE J. KOENIG  
ASHLEY N. LESTER  
DOUGLAS MACPHERSON  
MARK M. MAGUIRE  
JOSEPH B. McHUGH  
RODNEY W. McKENNA  
MDC SYSTEMS  
JAMES B. MURPHY  
N. E. FISHER & ASSOCIATES  
JOHN G. PARDEKOOPER  
JAMES D. PISCOPO  
STEVEN M. RIDENOUR  
GEORGE R. SCHOLLHAMER  
ROBERT L. SEELER  
E. MITCHELL SWANN  
STALEY J. TARQUINIO  
ERNESTO M. TOLENTINO  
MICHAEL WITKOWSKI  
CASEY YOUNKINS  
ERIC ZANOLINI  
STEPHEN ZEGESTOWSKY



The Philadelphia Chapter  
of the  
American Society of Heating,  
Refrigerating and Air  
Conditioning Engineers, Inc.

994 Old Eagle School Road  
Suite 1019  
Wayne, PA 19087-1866  
P 610-971-2169  
F 610-971-4859

Click [here](http://phila.ashraechapters.org) to visit  
our web site at:

<http://phila.ashraechapters.org>

Republication of material  
contained herein is expressly  
forbidden without official Chapter  
authorization. The Chapter does  
not speak or act for the Society.  
Any member with material to  
submit for inclusion in the  
*Climate* can send the information  
to:

Hope Silverman  
P 610-971-2169  
[hope@mmco1.com](mailto:hope@mmco1.com)

Material can include letters to the  
editor, member news, upcoming  
events, comments on chapter  
programs or issues, etc.

## **NOTICE**

On January 7, 2010 the Legislature enacted and the Governor signed into law P.L. 2009, C. 294 which requires Professional Engineers licensed in New Jersey to complete continuing education. The effective date of the new law is January 12, 2011. At this time, the State Board of Professional Engineers and Land Surveyors ("Board") is working on proposed regulations to provide guidance and clarification to its licensees and interested parties. This Notice is intended to provide information about the continuing professional competency requirements.

- A licensee shall complete not more than 24 continuing professional competency credits related to the practice of Professional Engineering in every biennial license renewal cycle, 2 of which shall be in professional practice ethics.
- The Board does not have a process in place to approve educational programs and providers at this time. However, the Board is working on proposed regulations to address these matters.
- A licensee is not required to acquire continuing professional competency credits until January 12, 2011. However, the Board anticipates that a current licensee shall be required to obtain 15 continuing professional competency credits, 2 of which shall be in professional practice ethics, on or before April 30, 2012 to meet the requirements for the 2012-2014 biennial renewal period.
- The Board anticipates that for the 2014-2016 biennial renewal period, and every 2 years thereafter, a licensee shall be required to complete 24 continuing professional competency credits, 2 of which shall be in professional practice ethics.

<http://www.njleg.state.nj.us/2008/Bills/PL09/294.HTM>

---

## **NEW MEMBERS**

David Robert Atkinson (Associate)  
Anthony Bifano (Student)  
Adam Blackburn (Associate)  
Rafael Carrero (Associate)  
Neville Clarke (Associate)  
Geoffrey Cotter (Student)  
Derek William Fink (Associate)  
Jeffrey Heilmann (Associate)  
George Richard Honeyford (Member)  
Kari Krolikowski (Associate)  
Gary Bryan Landsberg (Member)  
Wesley Lawson (Associate)  
Brendan McGrath (Associate)  
Richard Mohrfeld (Member)  
Shane Pannepacker (Associate)  
Christopher Allen Pyfer (Member)  
Jin Wen (Associate)