



Philadelphia Chapter

Quaker City CLIMATE

JOURNAL OF THE PHILADELPHIA CHAPTER OF THE AMERICAN SOCIETY OF HEATING, REFRIGERATING AND AIR CONDITIONING ENGINEERS, INC.

Thursday,
April 9, 2009

Volume 44, No. 8
April 2009

Student Scholarship Night

“Urban Outfitters Plant Tour”

Presented by
Scott H. Lawson, P.E., LEED AP
David Ziel & Julius Atkins

5:00-6:00 pm
Pre-Tour Orientation

6:00-8:00pm
Dinner & Tour

A Buffet style dinner will be served at this meeting.

Free parking available on site

FOR RESERVATIONS

**All attendees should register online
through Cvent.**

**To register please visit our NEW web site at
<http://phila.ashraechapters.org/>**

Upcoming YEA Event

ASHRAE members 35 years or younger come out for a night of bowling and food. Bowling starts at 6:30pm on Thursday, April 16th at Lucky Strike in Center City. An invite will be sent out via Cvent.

If you do not receive an invite and are interested, please contact Ashley Kenyon at akenyon@klingstubbins.com.

LOCATION

Urban Outfitters Headquarters
S 16th St & Flagship Ave
Philadelphia, Pennsylvania 19020
215-244-9777

Directions located on page 3

For security purposes, all guests must arrive at front gates before 6 pm. Admittance after 6pm will only be allowed with proof of event registration.

RESERVATION NOTICE

Reservations must be made
no later than 5:00 pm
on Wednesday, April 8, 2009.

COST

Philadelphia Chapter Members with
online reservation and prepayment
\$30

ASHRAE Members who have not paid
Philadelphia Chapter dues with online reservation and prepayment
\$35

Non-Members with
online reservation and prepayment
\$40

Young Engineers with online
reservation and prepayment
\$20

Students with online reservation
\$10.00

Phone reservations
to 610-971-2169
without online registration
\$45

Walk up fees
(based on availability)
\$45

From Our President

We really had a great tabletop event last month at Fisher's Tudor House. I want to thank all the vendors who participated and all those who came early to enjoy the show and socialize for a few hours. Our dinner speaker Brian Monk, PE came all the way from Canada for us. Brian is an ASHRAE Distinguished Lecturer who spoke to 130 guests about filtration for high performance buildings. The presentation is available on our website for those who missed it.

This month we have planned a physical plant tour of the renovated facilities now occupied by Urban Outfitters at the former Navy Yard. Coordinated by Bill Hart we will have three speakers and a meal starting at 5:00 then a tour of the facility. The HVAC systems here are unique and we have a rare chance to have the people involved with the design, construction and operation of the building talk with us. Please look for the invitation in your email or check our website. We will also award scholarships for three area college students who were nominated by their faculty members.

Ashley Kenyon has organized a YEA event later this month. See details elsewhere in the newsletter.

Once again for those consultants and vendor firms who want to advertise in the Philadelphia Chapter Directory for 2009-2010 Hope has sent out invitation letters. It is an inexpensive way to get information about your firm into the hands of the people who will use your goods or services the most.

We are also still looking for contributions to ASHRAE Research; your money goes to help improve the technology for a cleaner and more energy efficient environment for all of us and future generations.

Remember ASHRAE can help you further your career in many ways. We want to make participation in chapter and technical committees as easy as possible. We also offer free bulletin board service to look for jobs or post your resume on our website and in the newsletter.

Finally if you have any suggestions for improvement of our chapter or Society please contact me.

Jeff Gilbeaux

Jeff Gilbeaux, PE

jeff@gilbeauxassociates.com

856-988-1890

March Speakers Biographies

David Ziel

David Ziel joined Urban Outfitters, Inc. as Chief Development Officer in August of 2005, with responsibility across all brands for developing systems and strategy to fuel growth. Prior to accepting this position Mr. Ziel was the Vice President of Construction and Development at Chico's FAS where he distinguished himself within the industry by developing a team and strategy that brought the vision of founder and CEO Marvin Gralnick to life while at the same time creating a store rollout program that opened 500 locations during his tenure. Mr. Ziel also played an integral role in the acquisition of the White House | Black Market organization in 2003, allowing for a seamless transition and uninterrupted sales. Mr. Ziel has also held a senior position at Hollywood Video and began his career with a Construction Management position at Nike.

Julius Atkins

Mr. Atkins has a strong background in HVAC technology. He spent 4 years at the Whittier Technical School studying HVAC technology. Afterward, he went to Massasoit College for 2 years to study HVAC system design and received an Applied Science Associate Degree. He then attended University of Massachusetts receiving a Bachelor of Science Mechanical Engineering degree.

Julius Atkins started his career working as a HVAC technical contractor then decided to get into the design / engineering aspect of the HVAC industry. He furthered his Design experience working as a Mechanical designer for a MEP firm in AZ, LSW Engineers. He was very interested in efficient, innovative heating / cooling systems and decided to work for PEX manufacturers where he has been for the last 10 years, now working as a Commercial Sales Manager Uponor NA (formerly known as Wirsbo).

March Speakers Biographies (cont.)

Scott H. Lawson, P.E., LEED AP

Scott H. Lawson, P.E., LEEDAP is a partner at PHY (Paul H. Yeomans) Engineers, Inc. He was the Principle-In-Charge for the design of the Urban Outfitters Corporate Headquarters and has filled the same role on many other projects in and around the Philadelphia area. Examples of other projects include Comcast Center, American Commerce Center, the Waldorf Astoria Hotel and Residences, One Crescent Drive at the Navy Yard, and the SEI Corporate Headquarters in Oaks. All of these projects utilize sustainable design concepts; most are LEED certified or will seek certification. Mr. Lawson has been a LEED Accredited Professional since 2005 and has been an ASHRAE member since 1988.

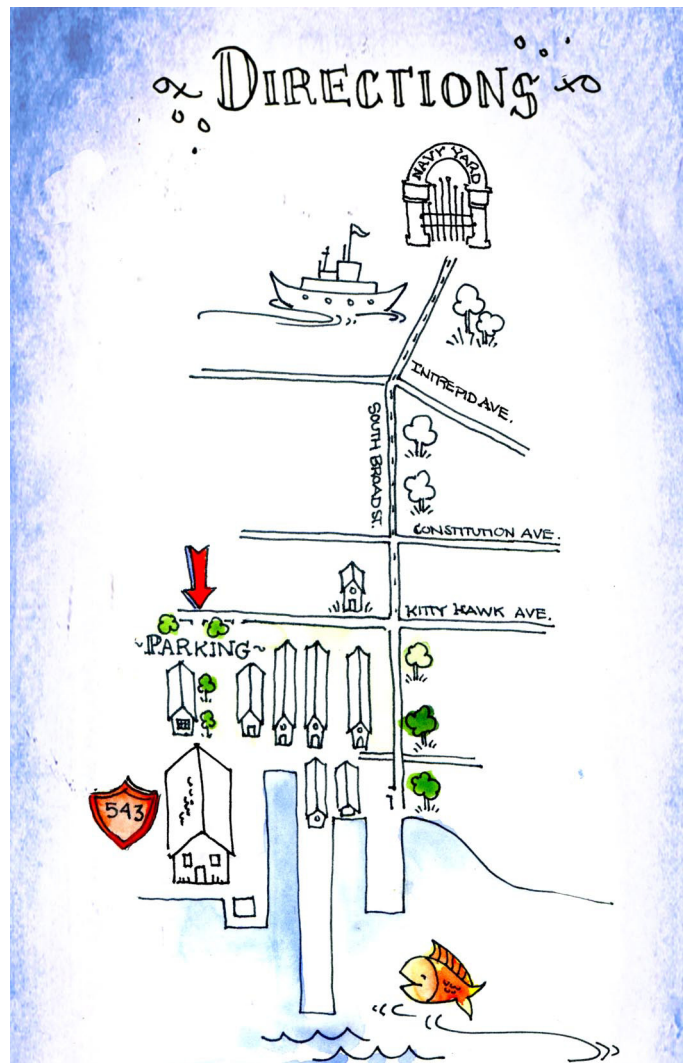
March Speakers Topics

Building 543 at the Philadelphia Navy Yard is a historically registered building that has been converted into the hub of Urban Outfitters operation. The mechanical systems include a central heating and cooling plant that currently is serving 5 buildings and will, eventually, be extended to serve 3 additional buildings. Hot and chilled water is distributed to the campus via an underground piping system. This building also includes a central kitchen/cafeteria, data center and fitness center for all of the employees and some clothing design areas. This building, when refurbished, included the floor slab raised to meet the flood plane requirements and was provided with a 25,000 square foot radiant heating and cooling system. During the winter months, the radiant system provides an even heat in the occupied zone and in the summer months eliminates much of the solar contribution resulting from the large expanse of south glass. This project received the 2007 'Award of Excellence' given by The Urban Land Institute which gives awards to the top 10 developments in North America.

David Ziel will talk about Urban Outfitters; Scott H. Lawson, P.E., LEED AP will talk about the project design and Julius Atkins will talk about the radiant floor heating and cooling system.

Pages 6 and 7 include a floor plan of the building

Directions to Site



From north of Philadelphia and from New Jersey via the Ben Franklin Bridge or the Walt Whitman Bridge:

South on I-95

Take Exit 17 (Broad Street)

Make a left on to Broad Street

Enter Main Gate at Navy Yard

At the gate, please tell the security guard you are attending an event at Building 543

Continue straight on Broad Street

Make a right onto Kitty Hawk Avenue
You can park in between buildings 12 & 15
(between the 4th & 5th bldgs. on left)

Make a left into the lot

There is a path from the parking lot to B543

PHILADELPHIA CHAPTER ASHRAE 2008 - 2009 PROGRAMS

For reservations and updates, check <http://phila.ashraechapters.org/>

| Date | Location | Dinner Topic | Theme | Joint Meeting |
|------------------|-----------------------|----------------------------|-----------------------------------|---------------|
| Thurs Mar 12 | Fisher's Tudor House | Air and Gas Filtration | Tabletop Vendor Show / Membership | |
| Thurs Apr 9 | Urban Outfitters | ASHRAE Scholarships | Tour | |
| Thurs May 14 | Dave & Buster's | ASHRAE IAQ Guide | Past Presidents, YEA, & History | |
| Monday June 1 | Northampton Valley CC | Golf Outing | | |
| Thurs June 11 | Temple University | 2009-2010 Planning Meeting | | |

We need your attendance!

If we are below our guaranteed level for attendees at our meetings, our treasury could be negatively effected.

Our programs are designed around the membership's input and we all need to support these meetings to maintain a strong/informed association.

We hope to see you at our next meeting.

Please come out and support our Chapter!

Corporate Sponsors Take Note

Those with corporate sponsor tickets must still make reservations for our meetings through Cvent (see link on first page). Please note that those with sponsor tickets who do not make reservations are not guaranteed entrance until all reserved seating is filled. Those reservations with sponsor tickets must have them at the time of the dinner. If you don't have them, you will have to pay the walk up rate for dinner. We cannot make arrangement for delivery of sponsor tickets at a date after

2008-2009

Philadelphia Area Directory
of Associations, Consulting Firms
and Manufacturers' Representatives
On Sale Now -
Just \$23.00 each!

Send your check to:
Philadelphia Chapter ASHRAE
994 Old Eagle School Road
Suite 1019
Wayne, PA 19087-1866

What is 16-40-40?

Every ASHRAE Student Member Should Know

Simply put, it's the best way for ASHRAE student members to continue receiving the many member benefits of ASHRAE after finishing college.

If you're about to graduate, the 16-40-40 program is designed for you to transfer your student membership for another year for only \$16. The second year is \$40. And the third year is \$40.

Bottom line: You get 3 years of valuable membership and save up to \$274. Save time, save money and continue receiving the professional benefits that will strengthen the beginning of your career.

March Dinner Meeting Filtration for High Performance Buildings & Table Top Vendor Night



Miss the previous meeting?

You can see the presenter's powerpoint presentation on our new website at <http://phila.ashraechapters.org/storage/presentation.htm>

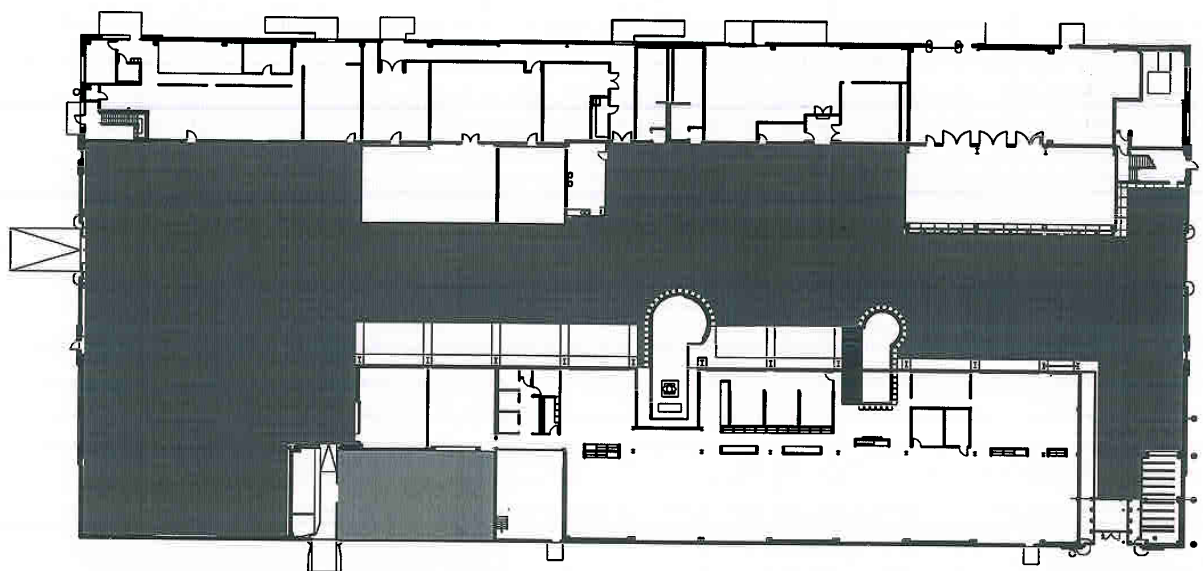
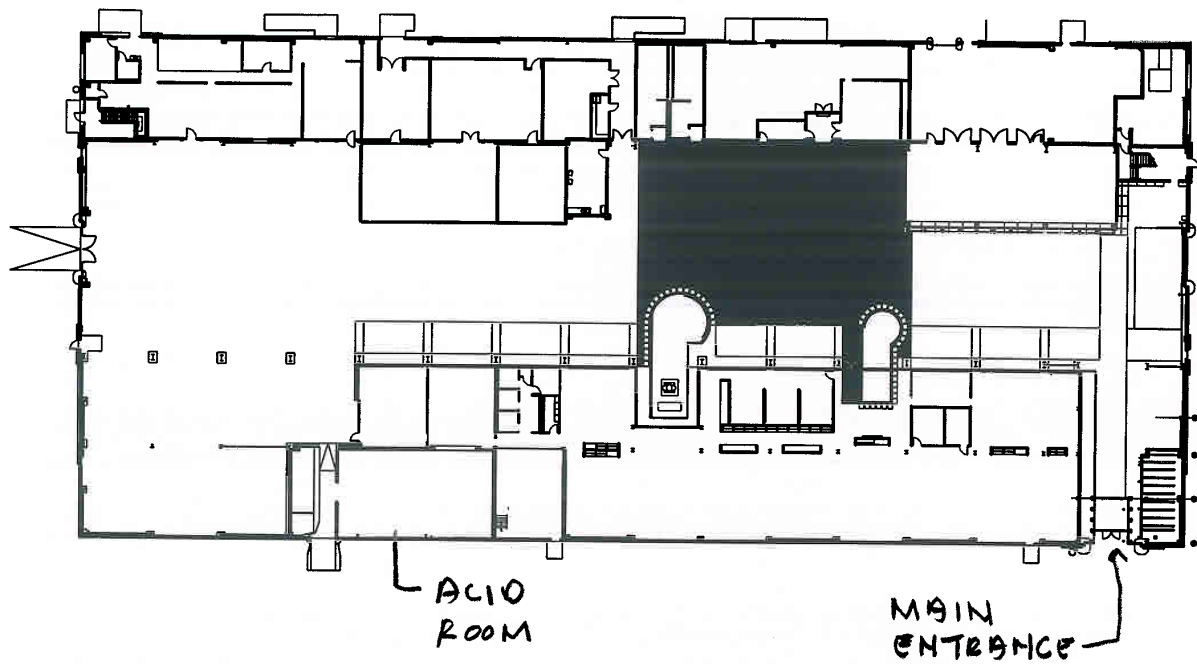
Design on the Delaware

The 2009 Design on the Delaware Regional Conference is coming to Philadelphia. The annual conference is being held on October 28th, 29th & 30th, 2009 at the Sheraton in center city. To those interested in more information visit :

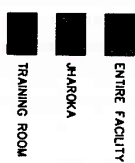
<http://phila.ashraechapters.org/DOD2009.pdf>

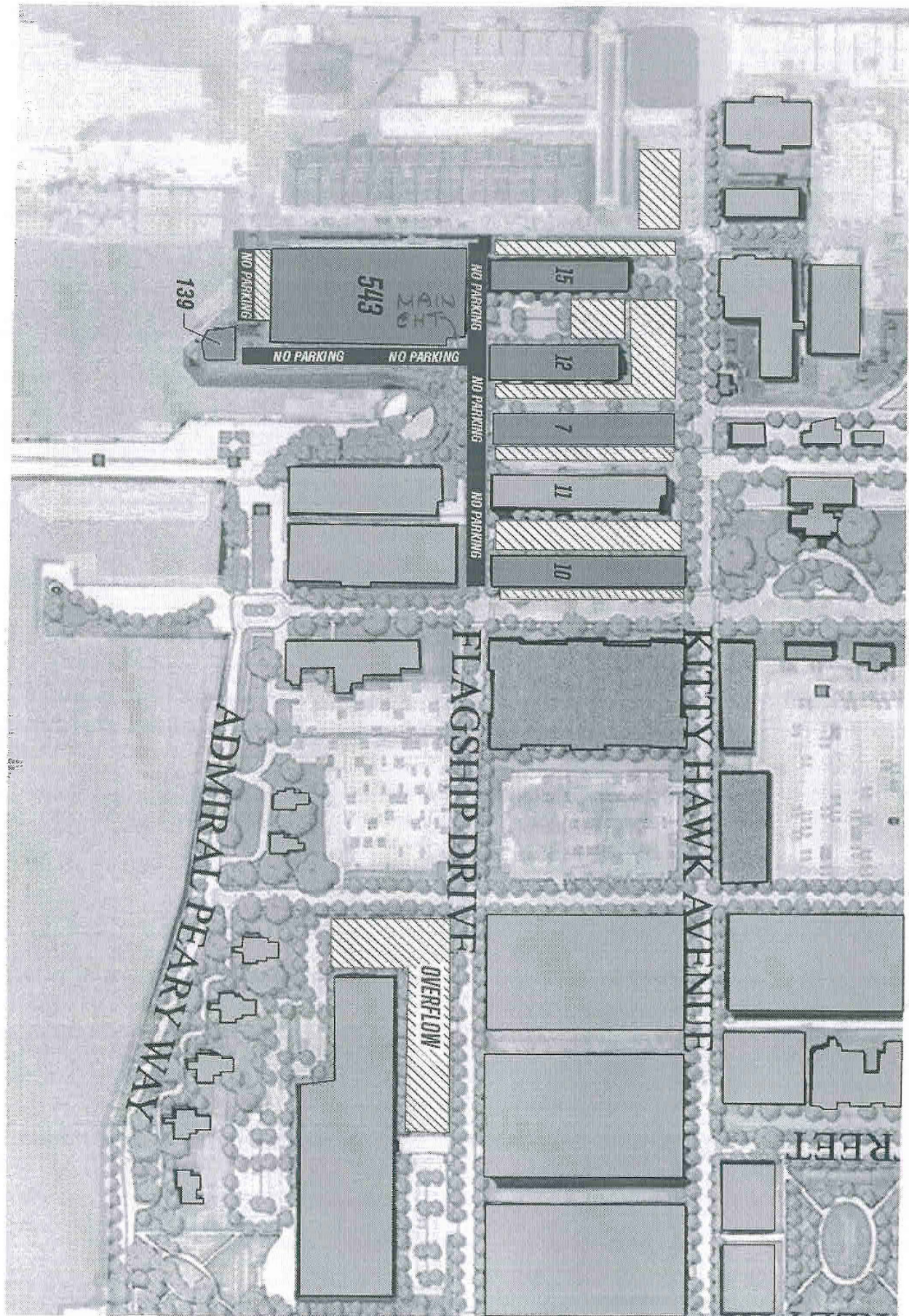
Advanced School Notice

The Philadelphia Chapter is looking for a coordinator and instructors for the ASHRAE Advanced Class which will begin next fall. Teaching is one night a week. We need to get these positions filled and all work coordinated immediately to prepare for the fall class. These are paid positions. All those interested please contact Bob Finkboner at robert.finkboner@siemens.com



5541- PRODUCTION
FIRST FLOOR







Philadelphia Chapter ASHRAE
2009 Nominating Committee

Slate of Candidates for 2009 – 2010 Chapter Year

The 2009 Nominating Committee is pleased to present the slate of Officers and Governors for the 2009-2010 Chapter Year. These candidates are to be voted on at the April 9th Meeting at Urban Outfitters. Nominations will be open for suggestions of candidates from the floor but will be closed just prior to the vote on the 9th. The Board of Governors will be installed at the May 14th Meeting at Dave & Busters. Please join us in congratulating these candidates.

President: **Bill Hart**

President-Elect: **John Pardekooper**

Vice President: **Bob Finkboner**

Treasurer: **Jim Piscopo**

Governor: **Jared Johnson**

Governor: **Mike Witkowski**

Governor: **Ashley Kenyon**

Senior Governor: **Jeff Gilbeaux**

ASHRAE

AMERICAN SOCIETY OF HEATING, REFRIGERATING AND
AIR-CONDITIONING ENGINEERS, INC. PHILADELPHIA CHAPTER

BASIC HVAC SYSTEM **DESIGN COURSE**

This is a demanding one-year course that introduces students to the fundamentals of HVAC design. Classroom activities will include lectures and problem solving sessions, supplemented by home reading and study assignments.

2009-2010 Course Subjects Include:

Fundamentals and Psychometrics
Load and Heat Transfer Fundamentals
Load Calculations
Pumps, Piping & Piping Systems
Basic Steam & Boilers
Electricity Fundamentals
Fans, Air Distribution & Duct Design
Refrigeration
Controls & Instrumentation
Equipment Selection

The class is a great way to further, or even begin, a career in HVAC.

Classes will meet Tuesdays and Thursdays from 6:15 PM to 8:30 PM beginning in early October and continue until the end of April. All classes will be held in Philadelphia. The Basic Class tuition is \$1,100.00, which includes all reference materials. Balance due at first course session. Please mail the application and deposit to the School Coordinator at:

To sign up or ask questions please contact:

Hope Silverman
Hope@multiservicemgmt.com

The Philadelphia Chapter of the
American Society of Heating, Refrigerating
and Air Conditioning Engineers, Inc.
994 Old Eagle School Road, Suite 1019
Wayne, PA 19087-1866
610.971.2169
fax 610.971.4859
<http://phila.ashraechapters.org/>

BACK BY POPULAR DEMAND!

ASHRAE

**AMERICAN SOCIETY OF HEATING, REFRIGERATING AND
AIR-CONDITIONING ENGINEERS, INC. PHILADELPHIA CHAPTER**

ADVANCED HVAC SYSTEM DESIGN COURSE

Through this challenging course, students will use architectural building backgrounds to develop a complete HVAC system. Design concepts will encompass air systems, chilled and hot water hydronic systems and equipment selections such as chillers, boilers and unitary rooftop. The schedule is a demanding one-year, 28-night course culminating in a student generated total system design. Additionally, there are plenty of out-of-class assignments to help students manage their workload.

**This course is a fantastic opportunity to develop
the tools necessary to further an HVAC Career.**

2009-2010 Course Subjects Include:

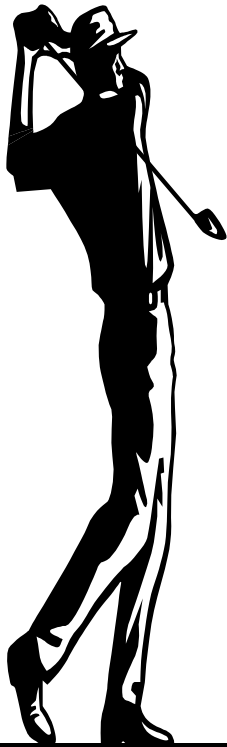
Code Evaluation
Load Calculation
System Evaluation & Selection
Equipment Selection
Layout
Controls
Specifications

All books and reference materials will be supplied. Classes will meet one evening each week, beginning in early September and continuing until the end of April. The location and tuition fee are still to be determined.

If you are interested in possibly enrolling in this course and would like to receive further information, please contact:

Hope Silverman
Philadelphia Chapter of ASHRAE
Phone 610-971-2169
philachapter@mail.ashrae.org

PHILADELPHIA ASHRAE CHAPTER ANNUAL SPRING GOLF TOURNAMENT



when: Monday, June 1, 2009 -- 1:00 pm Shotgun
Lunch will be provided at Noon; Dinner will be immediately after golf

where: Northampton Valley Country Club
Richboro, PA (near I-95 and Newtown-Yardley Exit)

cost: Golf, Lunch & Dinner: \$125.00 per person

hole sponsorships are available

Prizes include First, Second and Third Place Awards plus Longest Drive and Closest to the Pin Awards.

** Scramble Format – Singles and Foursomes are welcome! **

REGISTER ONLINE AT

<http://guest.cvent.com/i.aspx?4W,M3,360cd095-bddd-4afd-a967-550d9f4f80fd>

**Questions? Problems? Contact Jared Johnson at
215.886.8947 or via email jjohnson@schillerhersh.com**

AFFILIATE MEMBERSHIP GRADE

For an Annual Dues of \$40, Applicants under Age 30 can Join ASHRAE at this introductory membership level. Membership tenure in this grade is limited to three (3) years.

Affiliate Members Benefits Affiliate Members receive monthly issues of the ASHRAE Journal and Insights Newsletter. The annual handbook is not a benefit of this grade.

Qualifications

An Affiliate Member shall have the same qualifications as an Associate Member. They are:

1. Experience in technical matters or in design, operation, or maintenance in heating, refrigerating, air conditioning, or ventilating fields.
2. An interest in the advancement of the Society's aims.
3. Possess sufficient qualifications to cooperate with heating, refrigerating, air conditioning, or ventilating engineers in the advancement of relating to heating, refrigerating, air conditioning, or ventilating engineering and its application.

Limitations

- You do not receive ASHRAE Handbook with membership. You do not receive *ASHRAE Insights*. You get a one-time discount (20% off) on all Handbook items.
- You can serve on Chapter committees, but cannot hold office or vote at Chapter, Regional or Society level.

Contact For Receiving Application

Go to www.ashrae.org and click on "Join" in the upper right corner. This will take you to a page describing each membership grade, its benefits and qualifications, and a link to membership application forms.

MEMBERSHIP ADVANCEMENT!

Any Associate Member meeting the following requirement can apply for Advancement to the more entitling Member grade. By ASHRAE society definition:

A member shall have the equivalent of twelve society-approved years of experience composed of an approved combination of: (a) completed education beyond high school, (b) work experience, and (c) professional engineering or related registration or license issued by a legally authorized body.

All technical and scientific education shall be based on curricula approved by the Board of Directors.

Approved engineering curricula shall be equivalent to the accredited by the Accreditation Board of Engineering and Technology in the United States of America or the Canadian Engineering Accreditation Board. Scientific education in fields other than engineering shall be from a college or university course of study that has been accredited by an organization charged with monitoring standards of performance. *Society approved years of experience shall be credited as follows:*

One and one-half years of credit for each year of completed education for graduates of approved technical curricula. One year of credit for each year of education for non-graduates who have completed a least two years of approved technical curricula. One year of credit for each year of completed education for graduates of colleges or universities which do not have accreditations. Those holding associated degrees from technical institutions shall also be credited for one year for each year of education.

One year for each year of qualifying work experiences in the performance of duties in work related to ASHRAE fields of interest and shall have included research, teaching, design, contracting, engineering sales or engineering management.

Three years of credit for professional registration of license issued by a legally authorized body in engineering or related fields, the requirements of which as to education, examination, and active practice are satisfactory to the Board of Directors.

More information is available on the ASHRAE website (www.ASHRAE.org) under menu items Membership Resources...Manage Your Membership, the above definition is extracted from such application information in PDF file format. The application can also be filled interactively online. ASHRAE sends members who upgrade a \$20 gift certificate usable at the ASHRAE bookstore or towards ASHRAE membership renewal.

Member Services

Members who would like stay on top of the **latest news from ASHRAE** may join the News Release List Serve at <http://www.ashrae.org/template/AboutLinkLanding/category/1584>.

If you or your company are hiring, please take a moment to **review the resumés of chapter members** and students which have been posted on the chapter website at www.ashrae-phila.org/resumes.html. We will also **post your job opening** for one month. Send it to hope@mmco1.com.

Any member who wishes to **have their resumé posted on our website**, or who would like to update it, can email it in a pdf format to hope@mmco1.com. It will be posted for one month and may be renewed after that time.

Check

**<http://phila.ashraechapters.org/>
for further information
on the
Philadelphia Chapter!**

Please take note of our new web address

Welcome New Chapter Members!

New Members for the Month of February

New Members

Mr. William C. Livingwood
Mr. Matthew K Takita
Mr. Robert DeFeo, Sr
Mr. Michael Bergen
Mr. David Sagang

Inside This Issue

Page

| | |
|---|-----|
| Meeting Announcement | 1 |
| President's Message | 2 |
| Speaker's Bio and Topic | 2-3 |
| Directions to Tour Location | 3 |
| Chapter Event Schedule | 4 |
| Previous Month's Meeting Recap | 5 |
| Building Layout Plan | 6 |
| Site Layout Plan | 7 |
| 2009 - 2010 Candidates Nomination | 8 |
| Basic Course Announcement | 9 |
| Advanced Course Announcement | 10 |
| Golf Outing Announcement | 11 |
| Membership Grade Announcements | 12 |

This is your newsletter.

We welcome your input and comments.

The *Quaker City Climate*
is published eight times annually by

The Philadelphia Chapter of the
American Society of Heating, Refrigerating
and Air Conditioning Engineers, Inc.
994 Old Eagle School Road, Suite 1019
Wayne, PA 19087-1866
610.971.2169
fax 610.971.4859
<http://phila.ashraechapters.org/>

Republication of material contained herein
is expressly forbidden without official Chapter authorization.
The Chapter does not speak or act for the Society.
Any member with material to submit for inclusion
in the *Climate* can send the information to:

Matthew Trinsey
Clive Samuels & Associates, Inc.
1 Independence Way
Princeton, NJ 08540
(P) 609-627-7983 (F) 609-520-0974
matthew.trinsey@emerson.com

Material can include letters to the editor,
member news, upcoming events,
comments on chapter programs or issues, etc.