



May 2026
Volume 61, Issue 8

INSIDE THIS ISSUE:

President’s Message	2
Debra H. Kennoy Scholarship	2
Annual Golf Outing	3
Honors & Awards	4
Future City Philadelphia	7
Government Affairs News	8
Corporate Sponsorship	9
Annual ASHRAE Conference	9
Digital Directory Link	9
YEA Information	10
New Members	10
Membership Benefits	10
Chapter Technology Transfer	10

QUAKER CITY CLIMATE

MAY EVENT

Past Presidents’ Night | Student Awards | Presentation May 21, 2026

Join us for an evening of networking, recognition, and an engaging technical presentation at our annual Past Presidents’ Night. We’ll also be recognizing this year’s student award recipients.

Audwin Cash, CEO of GPS Air will present:

“HOW TO PROTECT PROJECT BUDGETS, MEET CODE AND IMPROVE INDOOR AIR QUALITY THROUGH ASHRAE 62.1 IAQP.”

The presentation will enhance participants’ knowledge and understanding of ASHRAE 62.1: Ventilation and Acceptable Indoor Air Quality for Commercial Buildings, with a particular focus on the Indoor Air Quality Procedure (IAQP) as a cost-effective, energy-efficient strategy for achieving optimal indoor air quality. Participants will gain practical skills in applying the IAQP through detailed guidance on ASHRAE tools, research, and supporting methodologies.

Audwin Cash is the CEO of GPS Air. Audwin joined GPS Air after roles as President of Climate Systems at Regal Rexnord, and SVP of Digital Controls at Acuity Brands Lighting. In these roles, Audwin has been a technical and business leader focused on bringing energy efficient solutions with an ROI to market. He holds a BS in Computer Engineering from Georgia Tech and MBA from Lehigh University.

**Stay up to date on
latest events and
meetings by
visiting the
ASHRAE Philadelphia
Chapter website at
ashraephilly.org**

Follow us on
[LinkedIn](#)

Ticket Prices
\$50 Chapter Member
\$0 Life Member
\$75 Non-Member

Limited Seats Available
[CLICK HERE TO REGISTER](#)

**FOGO
DE
CHÃO**

**May 21, 2026
6:00 pm. To 8:00 p.m.
Fogo de Chão Brazilian Steakhouse
1337 Chestnut Street
Philadelphia, PA 19107**

2025-2026

President

Tyler Holland

President-Elect

Anthony Rodio, PE

Vice President

Clay Boggs

Treasurer

David Morrison, PE

Secretary

Alexa Smith, PE

Senior Governor

Jason Trefz

Governors

Canaan Colwick

Hogan Cuny

Sam Hall

Attendance Committee

David Morrison, PE

Basic School Coordinator

James Lill, PE

Chapter Historian

Andrew Mondell, PE

Chapter Technology

Transfer Committee Chair

Canaan Colwick

Electronic Communications

Mark Carbonaro, PE

Government Affairs

Andrew Mondell, PE

Membership Promotion Chair

Blake Kiedrowski

Newsletter Editor

Cindy Cornish

Program Committee Chair

Anthony Rodio, PE

Research Promotion Chair

Frank Kunze

Student Activities Chair

Hogan Cuny

Young Engineers in ASHRAE

Sam Hall

PRESIDENT'S MESSAGE

Dear Philadelphia ASHRAE Chapter Members,

As the Chapter year comes to a close, I couldn't be prouder of everything we've accomplished together.

This year, we hosted not one, but two panel discussions, including a joint event with another organization. We also exceeded expectations with a sold out Xfinity Mobile Arena Facilities Tour and saw our annual golf outing fundraiser achieve record year-over-year growth in both revenue and profit. Proceeds from the outing support the Debra H. Kennoy Scholarship, which we proudly award each year.

These accomplishments are a direct reflection of the support and dedication of our Board Members, Chapter Members, and Sponsors. Because of you, our Chapter continues to grow stronger every year. Thank you to everyone who contributed their time, energy, and support throughout the year.

As we wrap up the Chapter year, we are preparing for our May meeting, which includes our annual Past Presidents' Night and Student Awards Ceremony. During the event, we will recognize this year's scholarship and book grant recipients and host a presentation by Audwin Cash titled "How to Protect Project Budgets, Meet Code and Improve Indoor Air Quality through ASHRAE 62.1 IAQP."

The meeting will take place at Fogo de Chão in Philadelphia on May 21 from 6:00 PM to 8:00 PM. We hope to see you there.

June 30 marks the end of the Chapter year, so please keep an eye out for additional events and updates before Summer. If you have been thinking about getting more involved with the Chapter, now is a great time to jump in and help shape next year's success.

The 2026 ASHRAE Annual Conference will take place June 27 through July 1 in Austin, TX, and the Region III CRC will be held August 13 through 15 in Arlington, VA.

Our next Board Meeting will be held virtually on May 28 at 12:00 PM. Please feel free to reach out to me directly if you would like additional information.

Thank you again for your continued support of the Philadelphia Chapter.

Sincerely,
Tyler A. Holland
Philadelphia Chapter President
c021@ashrae.net

DEBRA H. KENNOY SCHOLARSHIP 2026

EMPOWERING FUTURE LEADERS IN HVAC&R

2026 Scholarship Amount: \$7,250

The ASHRAE Philadelphia Chapter proudly offers the Debra H. Kennoy Scholarship Fund annually to a full-time student in the Greater Philadelphia area interested in a profession in the HVAC&R industry. This Philadelphia scholarship is especially aimed at female students pursuing studies in engineering, mechanical engineering, architecture, science, chemistry, and HVAC&R fields.

For more information on scholarships through ASHRAE, [click here.](#)



The ASHRAE Philadelphia Chapter Annual Golf Outing held on April 27, 2026 at Trump National Golf Club Philadelphia was a success!

We could not have done this without the support of our many volunteers and corporate sponsors. Thank you!

CORPORATE SPONSORS

Air Control Concepts
Hospitality Sponsor

HC Nye
Hospitality

AMZ
Debra H. Kennoy Scholarship

KMC
Dinner

Arkema
Debra H. Kennoy Scholarship

RD Blitzer Co.
Tee Box

Centergy
Golf Tee

Sass, Moore & Associates, Inc.
Golf Outing

Chesapeake
Trophy

Trefz Engineering
Debra H. Kennoy Scholarship

CS&E
Lunch

Tristate
Debra H. Kennoy Scholarship

Delren
Flag Pin

Victaulic
Hors D'oeuvres Sponsor

Delval
Golf Ball

GP Energy Products / Merion Pumps
Cigars

THANK YOU FOR YOUR SUPPORT!

HONORS & AWARDS

The next few pages highlight the various awards designed to recognize the dedication of ASHRAE members. Nominate an ASHRAE member today!

For more information, visit <https://www.ashrae.org/membership/honors-and-awards>

Awards with a May 1 deadline:

ASHRAE Award for Distinguished Public Service
 ASHRAE Hall of Fame
 ASHRAE Pioneers of the Industry
 F. Paul Anderson Award
 Fellow
 Honorary Member

Awards with a December 1 deadline:

Andrew T. Boggs Service Award
 Distinguished 50-Year and 75-Year Member Award
 Distinguished Service Award (DSA)
 Louise & Bill Holladay Distinguished Fellow Award
 Exceptional Service Award (ESA)
 Eunice Foote Decarbonization Award

Do you know an ASHRAE Member who has made notable contributions to the industry?



Nominate
 them for ASHRAE Fellow!

NOMINATION PROCESS:

- A current ASHRAE Member must complete and submit the Fellow nomination by May 1, which requires a summary of outstanding accomplishments, significant work, and publications.
- Letters of recommendation are required from one current ASHRAE Fellow and one or two professional references.
- The nominee's ASHRAE bio and headshot are required.
- Make sure to complete the check list included at the end of the nomination form.

REQUIREMENTS:

- ASHRAE Full Member grade for at least 10 years by nomination deadline.
- Made substantial contributions to the industry.
- Attained distinction in the fields of heating, refrigeration, air conditioning, ventilation or the allied arts and sciences.
- ASHRAE participation is not a qualifying factor.

RECOGNITION:

- Those elevated to the grade of Fellow will be recognized at the ASHRAE Winter Conference during the Plenary.
- Recognition is in the form of a plaque and a lapel pin.

**ASHRAE
 Fellow**

HONORS & AWARDS—May 1 deadline

F. Paul Anderson Award

The F. Paul Anderson Award is ASHRAE's highest award



This award honors members for notable achievement and outstanding work or service in any field of the Society.

NOMINATION PROCESS:

- A current ASHRAE Member must submit the following items by May 1: letter of recommendation, nominee's ASHRAE bio, nominee's headshot.

REQUIREMENTS:

- Shown exceptional leadership in the HVAC&R industry, ASHRAE, and society.
- Has broad-based activities of outstanding value in consulting, contracting, engineering, design, and ASHRAE-related activities.
- Open to any ASHRAE Member.

RECOGNITION:

- Recipients will be recognized at the ASHRAE Annual Conference during the Plenary.
- Airfare to the ASHRAE Annual Conference will be paid by ASHRAE.
- Recognition is in the form of a plaque.

Do you know of a leader in the HVAC&R industry who you'd like to memorialize?



The ASHRAE Hall of Fame and Pioneers of the Industry awards recognize trailblazers in the industry who have passed away and shown evidence of distinction, either technically or academically.

NOMINATION PROCESS:

- A nominee must complete the electronic nomination form, which includes a summary of significant positions held, outstanding contributions, honors/recognitions, publications, and involvement in ASHRAE or other associations.
- A letter of recommendation is optional.
- The nominee's ASHRAE bio and headshot are required.

REQUIREMENTS:

- The ASHRAE Hall of Fame is for individuals who were members of ASHRAE or a predecessor Society.
- Pioneers of the Industry is for individuals who were not ASHRAE members.

RECOGNITION:

- Recipients will be recognized at the ASHRAE Winter Conference during the Plenary.
- Hall of Fame: airfare and two nights lodging for the individual who accepts the award on behalf of the recipient.
- Recognition is in the form of a plaque.

ASHRAE Hall of Fame

ASHRAE Pioneers of the Industry

HONORS & AWARDS—December 1 deadline

Do you know of an ASHRAE Member that has served ASHRAE and given freely of their time and talent on behalf of the Society?



Nominate
them for the Andrew T. Boggs Award!

NOMINATION PROCESS:

- A current ASHRAE Member must submit the following items by December 1: letter of recommendation, nominee's ASHRAE bio, nominee's headshot.

REQUIREMENTS:

- Current ASHRAE Member who has already received the Exceptional Service Award (ESA)
- Continuing, unselfing, dedicated, and distinguished service to the Society

RECOGNITION:

- Recipients will be recognized at the ASHRAE Annual Conference during the Plenary.
- Airfare to the ASHRAE Annual Conference will be paid by ASHRAE.
- Recognition is in the form of a plaque.

Andrew T. Boggs Award

Eunice Foote Decarbonization Award



The Eunice Foote Decarbonization Award recognizes an ASHRAE Member who works to reduce carbon emissions in the built environment.

NOMINATION PROCESS:

- A current ASHRAE Member must submit the following items by December 1: cover letter (300-word limit), point tally form, nominee's ASHRAE bio, nominee's headshot.

REQUIREMENTS:

- This award is available to ASHRAE Members who have demonstrated outstanding achievement in ASHRAE decarbonization activities.
- Must meet a 5-point minimum on the point tally form.

RECOGNITION:

- Recipients will be recognized at the ASHRAE Annual Conference during the Plenary.
- Recognition is in the form of a plaque.

Eunice Foote Decarbonization Award

Do you know an ASHRAE Member who has made notable contributions to the industry?



Nominate
them for Louise & Bill Holladay Distinguished Fellow Award:

NOMINATION PROCESS:

- A current ASHRAE Member must submit the following items by December 1: letter of recommendation, nominee's ASHRAE bio, and nominee's headshot.

REQUIREMENTS:

- Current ASHRAE Fellow.
- Continued preeminence in engineering or research work.
- ASHRAE participation is not a qualifying factor.

RECOGNITION:

- Recipients will be recognized at the ASHRAE Annual Conference during the Plenary.
- Airfare to the ASHRAE Annual Conference will be paid by ASHRAE.
- Recognition is in the form of a plaque.

Louise & Bill Holladay Distinguished Fellow Award

Sass-Moore Rentals provides dependable portable HVAC and environmental control solutions throughout the tri-state area. Backed by more than 50 years of industry experience through the Sass-Moore family of companies.

Our rental fleet includes portable air conditioners, heat pumps, and dehumidifiers designed to keep facilities and projects operational in any season.

Whether supporting planned construction projects, emergency outages, equipment failures, or supplemental comfort needs, our team delivers responsive service, dependable equipment, and practical solutions tailored to each application.

At Sass-Moore Rentals, we understand that downtime is not an option. Our focus is on fast turnaround times, knowledgeable support, and trusted temporary HVAC solutions that help customers maintain productivity, protect equipment, and keep occupants comfortable when it matters most.



SASS-MOORE RENTALS

We specialize in temporary cooling, heating, and dehumidification solutions.

- Commercial
- Industrial
- Healthcare
- Education
- Construction
- Facility management applications.

Questions about rentals?

Call us at (856)345-9920
or visit us at
[Sass-Moore Rentals](#)

Mention this post and get a 15% discount!

The Philadelphia Chapter of ASHRAE is a proud sponsor of the Future City competition. On January 24, 2026, **over 300 students on 44 teams and more than 100 volunteers** took part in the regional competition held at Archbishop Carroll High School in Radnor, PA.

- REGIONAL WINNERS**
- 1st Place** Lionville Middle School
 - 2nd Place: Downingtown Middle School
 - 3rd Place: St. Mary Interparochial School
 - Honorable Mentions: St. Andrew School, Pottsgrove Middle School and Lower Moreland Middle School

***Congratulations to
Team Alimora of Lionville Middle School!
Winners of the middle school level at the national
competition held in Washington, DC!***

To learn more about this year's winners visit
<https://www.futurecityphilly.org>



2026 THEME:

Design a city that eliminates food waste from farm to table and keeps your citizens healthy and safe.

Future City is a hands-on cross-curricular educational program that brings STEM to life.

To learn more, visit

[Future City](#) and [Future City Philly](#)

GOVERNMENT AFFAIRS COMMITTEE NEWS**Questions or comments? Contact:**

Andrew Mondell, Government Affairs Committee Chair
Andrew.Mondell@AMZenergysystems.com

Katherine Mahon, Government Affairs Committee Member
kem@ba-inc.com

EPA Postpones Reporting on PFAS Reporting Requirements

On April 13, the U.S. Environmental Protection Agency (EPA) published a final rule postponing reporting and recordkeeping of perfluoroalkyl and polyfluoroalkyl substances (PFAS) under Section 8(a)(7) of the Toxic Substances Control Act (TSCA). This action moves the start of the reporting period to January 31, 2027, or 60 days following the effective date of the agency's forthcoming revision to the PFAS 8(a)(7) rule. Last November, EPA proposed to amend the TSCA Section 8(a)(7) regulation, which requires PFAS manufacturers and importers to electronically report information regarding uses, production volumes, disposal, exposures and hazards from PFAS or PFAS-containing articles between 2011 and 2022. EPA proposed amending the regulation to incorporate exemptions to the scope of reportable manufacturing activities for a de minimis exemption of 0.1 percent; imported articles; byproducts; impurities; research and development; and non-isolated intermediates. The *Federal Register* notice can be found [here](#).

DOE Issues RFI on Energy Building Codes

On May 4, the U.S. Department of Energy (DOE) issued a request for information (RFI) to "DOE is seeking input on its methodology for assessing consumer impacts associated with residential and commercial building energy codes, toward the objective of ensuring transparency in building energy code evaluations." This has implications for ASHRAE Standard 90.1, as the RFI seeks information on "potential alternatives to the IECC and Standard 90.1 that can better represent consumer interests and better meet the objectives of safeguarding affordability and consumer choice." Additionally, the RFI also seeks input on the industry's consensus-based processes for reviewing and updating 90.1. Public comments are due August 3, and the *Federal Register* notice can be found [here](#).

Congressmembers Introduce Legislation to Restore Energy Tax Credits

On April 23, Republican Reps. Brian Fitzpatrick (PA-1), Mike Lawler (NY-17), Max Miller (OH-7), and Mike Carey (OH-15), introduced H.R. 8477, the American Energy Dominance Act. This legislation would strengthen several energy and efficiency tax incentives that were curtailed last year under H.R. 1, the One Big Beautiful Bill Act. Specifically, the [legislation](#) would:

- Restore the 179D Energy Efficient Commercial Buildings Deduction without a scheduled expiration. Currently the deduction is scheduled to expire on June 30, 2026.
- Extend the 45L New Energy Efficient Home Credit through December 31, 2032.
- Extend the 45V Clean Hydrogen Production Credit construction deadline from January 1, 2028, to January 1, 2033.
- Preserve long-term certainty for the 45Y Clean Electricity Production Credit and 48E Clean Electricity Investment Credit.

Join Us in Austin!

June 27 - July 1, 2026



CLICK HERE FOR MORE INFORMATION



2026 ASHRAE ANNUAL CONFERENCE
JUNE 27 - JULY 1, 2026 | AUSTIN, TX

Become a 2026-2027 Corporate Sponsor of the Philadelphia Chapter

Your firm's participation in this program would enable us to make a donation to ASHRAE's Research Promotion which includes over \$1.9 million in local research funding.

Some of the benefits your company will enjoy as a Corporate Sponsor include:

- Listing on the Chapter's website with a link to your own website.
- Five (5) free log-ins to the Digital Directory.
- \$100 discount on an advertisement in the Digital Directory.
- Tickets to attend our dinner meetings which include quality educational programs.
- We offer a few different levels of corporate sponsorship. Each level will receive the same types of benefits, with some differences in quantities and discounting.

For more information, please contact:

Tyler Holland
 President, ASHRAE Philadelphia Chapter
c021@ashrae.net

Thank you for your support!

Our Chapter Digital Directory is available!

The link to the Directory of Manufacturers' Representatives in the Philadelphia Area is on our [home page](#) on the website, or you may [click here](#) to advertise or purchase access to the directory!





The Philadelphia Chapter
of the
American Society of Heating,
Refrigerating and Air
Conditioning Engineers, Inc.

994 Old Eagle School Road
Suite 1019
Wayne, PA 19087-1866
P 610-971-2169

Visit

our web site at:

www.ashraephilly.org

Follow us

on [LinkedIn](#)

Republication of material
contained herein is expressly
forbidden without official Chapter
authorization. The Chapter does
not speak or act for the Society.
Any member with material to
submit for inclusion in the
Climate can send the information
to:

Cindy Cornish
P 610-971-2169
cindy@mmco1.com

Material can include letters to the
editor, member news, upcoming
events, comments on chapter
programs or issues, etc.

NEW PHILADELPHIA CHAPTER MEMBERS—WELCOME!

Michael Atkins	Gary Pecoraro
Keith Camp	Brian Pelipesky, Jr.
William Fennell	Luke Rodebaugh
Spenser Jenkins	Kevin Ruan
Min Lin	Darren Stauffer
Anastacia Michigan	Delaney Wagner



Want to know more about the Young Engineers in ASHRAE (YEA) Committee?

YEA supports activities for professional ASHRAE members (35 and younger) with a focus on future leadership in ASHRAE and the HVAC&R industry.

[To learn more, please click here.](#)

What are the benefits of paying Philadelphia Chapter *dues** ?

Discounts:

- \$200 Discount for Basic HVAC Design Class
- Discounts on Monthly Chapter Meetings
- Free access to the Digital Directory
- And much more!

***Note that Philadelphia Chapter Membership Dues are \$50/year.**

To receive discounts, please remit your Chapter dues when renewing online or applying for a new membership. Feel free to upgrade online by clicking [here](#) or contact c021@ashrae.net for assistance.

Membership Advancement

If you are currently an ASHRAE Associate Member, becoming a full Member is easier than you think! The following count toward the required **12 points** to advance to full membership status. You must update your ASHRAE online biography and send an email to membership@ashrae.org to advance.

Non-accredited degree = 4 points
PE = 4 points

Accredited degree = 6 points
Industry experience = 1 point/year

Understanding The Green Grid's Water Usage Impact (WUI) Metric: A Better Way to Measure Data Center Water Sustainability

As sustainability expectations continue to rise, data center operators are being challenged to think more critically about how resources are consumed and what impact those decisions have beyond facility walls. While energy efficiency has long been the primary focus, water use is quickly becoming just as important.

Metrics such as Power Usage Effectiveness (PUE) and Water Usage Effectiveness (WUE) have helped the industry quantify efficiency. However, these metrics alone do not fully capture the environmental consequences of water consumption. That gap is precisely what the Water Usage Impact (WUI) metric was designed to address. Let's start with an overview of [The Green Grid](#) (TGG)'s metrics.

A Brief History of Data Center Sustainability Metrics

TGG has played a central role in shaping how the data center industry measures efficiency and sustainability. In 2007, it introduced power usage effectiveness (PUE), which rapidly became the global standard for evaluating infrastructure energy effectiveness. Over time, additional metrics followed, including partial PUE (pPUE), water usage effectiveness (WUE), energy reuse effectiveness (ERE), carbon usage effectiveness (CUE), and others.

Each of these metrics provides valuable insight into a specific aspect of performance. However, they are calculated independently and do not account for how factors such as geography, climate, or resource scarcity influence environmental impact. As sustainability goals expanded beyond energy efficiency alone, it became clear that a more contextual approach was needed.

Additionally, industry voices have called for next-generation metrics that help data centers advance resource efficiency across energy, water, and land use, noting that these broader measures will be critical as digital infrastructure investments rapidly grow.

And so, in 2025, TGG developed its latest metric, water usage impact (WUI). To better understand the importance of WUI, let's start with WUE.

A Review of Water Usage Effectiveness (WUE)

WUE is a useful metric for understanding how much water a data center consumes relative to the power drawn from the IT equipment. This is basically broken down into two forms: site water use (a calculation measuring the water used at the data center) and source water use (a calculation measuring the amount of water that is utilized in the power production that is being provided to the data center).

While WUE speaks to the balance between water use and power use, it has some notable limitations when used on its own.

WUE Limitations: Here are some perceived limitations of the WUE metric.

- WUE does not account for where the facility is located or where the water is used.
- It treats all water sources equally regardless of scarcity.
- It can unintentionally encourage design decisions that reduce water consumption at the expense of higher energy or carbon impact.
- In some cases, striving for zero on-site water use may lead to increased emissions if alternative cooling methods rely heavily on energy-intensive systems.
- Future sustainable metric frameworks emphasize the need to align water and carbon measures to better guide investment and operational choices.

CHAPTER TECHNOLOGY TRANSFER

Sustainability reports from operators show that data center water demand can pose real risks in water-stressed areas, adding urgency to the need for impact-focused measurement. As data center capacity continues to grow and water stress increases in many regions, these considerations can become more significant.

Because more context was needed, WUI is generally regarded as an improvement upon the WUE metric. Let's dive in.

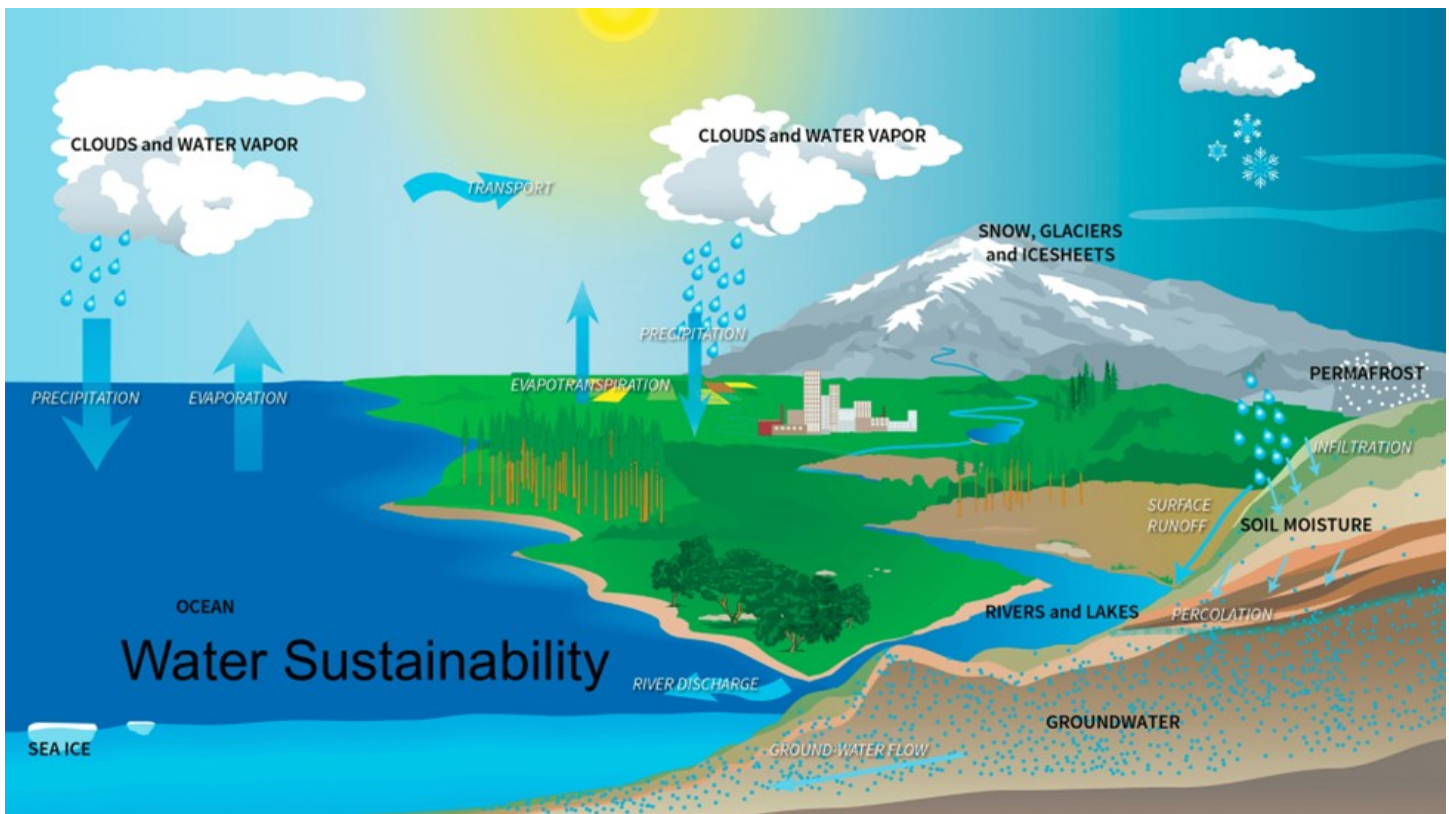
Introducing Water Usage Impact (WUI)

Water Usage Impact was developed by TGG to address the above challenges by adding environmental context to water measurement. Rather than focusing solely on efficiency, WUI evaluates the impact of water consumption based on local availability. At a high level, WUI combines two factors:

1. The amount of potable water a data center consumes for cooling.
2. The level of water stress in the geographic region where the facility operates .

By bringing these elements together, WUI helps organizations understand not only how much water they use, but also how that use affects local water resources. It expands on the idea of WUE by introducing external water scarcity and environmental impact into the measurement framework.

Importantly, WUI focuses on water that is truly consumed. Water that is withdrawn from natural bodies and returned without harm, internally recycled water, and on-site collected rainwater are excluded. This approach ensures the metric reflects real environmental impact rather than simple water movement.



Why Geography Matters in Water Sustainability

Water is a renewable resource, but its availability varies widely by location. Some regions have abundant supplies with minimal long-term impact from industrial use. Others rely on stressed aquifers or limited surface water, where even modest withdrawals can increase competition between communities, agriculture, and industry.

WUI accounts for these differences by incorporating regional water stress data into its evaluation. This allows data center operators to assess water use decisions within the context of local conditions, rather than treating water as a uniform input regardless of location.

Real-world sustainability concerns are already driving attention to this issue. Analyses by environmental organizations highlight that water impacts from data centers may expose companies to operational and financial risk when facilities are located in areas facing water scarcity.

As climate patterns shift and demand grows, understanding these regional dynamics becomes increasingly important for long-term resilience, responsible growth, and better stakeholder decision-making in data center development.

Summarizing How WUI Differs from WUE

Although WUE and WUI are related, they serve different purposes.

WUE measures how efficiently water is used relative to IT energy consumption. WUI evaluates how that water use affects the surrounding environment. WUE accounts for source water use, while WUI focuses on scarcity and local impact. WUI also provides insight into how a data center's operations influence regional water availability, something WUE does not address.

Used together, these metrics offer a more complete picture of water sustainability. Used in isolation, WUE may overlook important environmental risks.

Designed as a Practical Decision Tool

One of the strengths of WUI is that it was designed with real-world operations in mind. The methodology emphasizes clarity, objectivity, and ease of use. It leverages existing data sources such as Data Center Infrastructure Management (DCIM) systems and does not require invasive measurement or operational disruption.

WUI is also intended to support scenario analysis. Data center teams can model how changes in location, cooling strategy, or water consumption levels may influence environmental impact over time. This makes WUI especially valuable during site selection, expansion planning, and cooling system design.

It is also important to note that WUI is not meant to be a benchmarking tool for comparing one data center to another. Instead, it is designed to support internal evaluation, planning, and progress tracking within an organization.

WUI adds some clarity to water-use decisions based on geography and water availability.

What WUI Means for Cooling System Design

Cooling systems are one of the primary drivers of water consumption in data centers, particularly those that rely on evaporative or adiabatic processes. By accounting for WUI and using the [WUI Scoring Calculator](#) designers and operators can better understand how different cooling approaches interact with local water conditions.

CHAPTER TECHNOLOGY TRANSFER

In some regions, water-based cooling may offer an efficient and sustainable solution. In others, alternative approaches may reduce environmental impact even if they consume more energy. WUI helps inform these tradeoffs by providing a clearer picture of overall impact rather than focusing on a single variable.

For organizations pursuing long-term sustainability goals, this balanced perspective is essential.

Key Takeaways

Water Usage Impact can inform data center site selection, assist in optimizing cooling methods, boost transparency and credibility, and track performance and efficiency more effectively.

WUI represents an important step forward in data center sustainability measurement. By incorporating geographic water stress into water use analysis, WUI provides insight that traditional efficiency metrics cannot.

We do acknowledge that, currently, the WUI measurement does not include source water. While WUI is an improvement to WUE, we believe the metric will be even more useful once calculations consider source water.

Key benefits of WUI include:

- A clearer understanding of how water use affects local resources.
- Better support for site selection and cooling design decisions.
- Improved alignment between operational efficiency and environmental responsibility.
- A practical framework for planning and scenario analysis.

In the age of AI and as water availability becomes an increasingly critical consideration, tools like WUI will play a useful role in helping the industry make informed and responsible decisions. We also look forward to further developments supporting the shift toward water usage and sustainability for data centers.

###